

OssMem

OssMem is a resorbable bovine-derived Type I collagen membrane designed for guided bone regeneration (GBR). It acts as an effective barrier against soft tissue infiltration, maintains volume stability during healing, and disappears without requiring removal - simplifying treatment protocols.



EFFECTIVE SOFT TISSUE BARRIER

Dense collagen layers prevent epithelial ingrowth, ensuring secure bone regeneration.



RAPID HYDRATION, PREDICTABLE RESORPTION

Hydrates fully in ~120 seconds; resorbs within approximately 4 months, matching typical bone healing cycles.

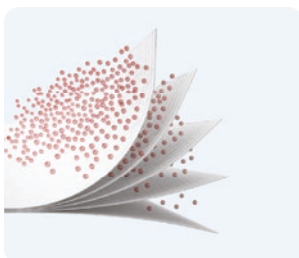


MINIMIZES INFLAMMATION

Produced from high-purity New Zealand bovine collagen, resulting in Grade "0" inflammatory reaction.



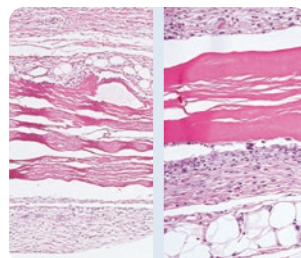
Product Details



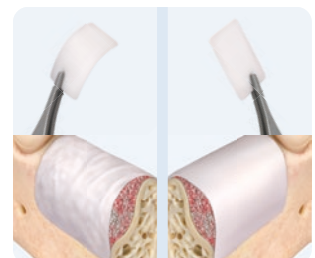
New bone formation by blocking soft tissue penetration



Optimal regeneration of bone & soft tissue



Membrane safe from inflammation



Two Options
Soft & Hard