

Positioning Guide KIT

Accurate implant positioning is critical to long-term treatment success, but full surgical stents can be time-consuming to produce and cumbersome in everyday practice. The Positioning Guide Kit provides **precise positioning** with a simple, streamlined workflow, helping **reduce time and cost** while improving handling and ergonomics for **predictable everyday outcomes**.



SIMPLIFIED GUIDE WORKFLOW

Eliminates the need for surgical stents, allowing rapid in-clinic positioning with minimal setup.



ACCURATE POSITIONING & DIRECTION

Enables precise determination of both entry point & angle, ensuring accurate drill guidance and improved outcomes.

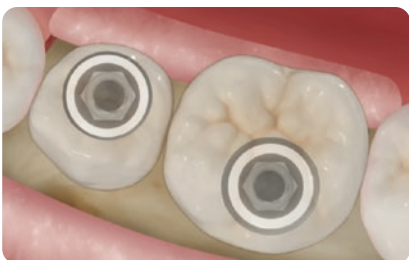


MINIMIZE PROSTHETIC COMPLICATIONS

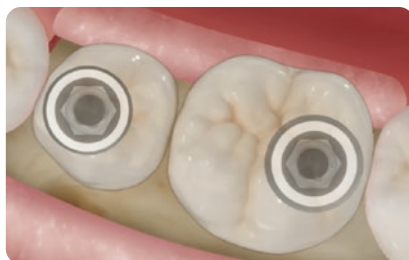
Minimizes prosthetic adjustments by supporting prosthetically driven implant positioning.



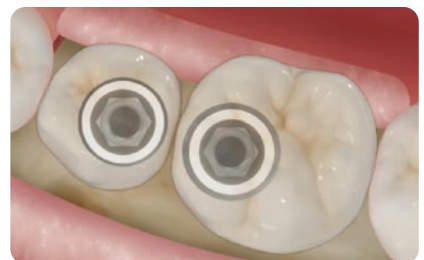
To Avoid Misplacements as Below



Incorrect Implant position



Placed too close to the adjacent teeth



Placed too close to each other

Positioning Guide KIT (OPGPK)



GD2208NC
GD2213FNC

Guide Drill



SGB050 SGB080
SGB060 SGB090
SGB070 SGB100

Single Guide

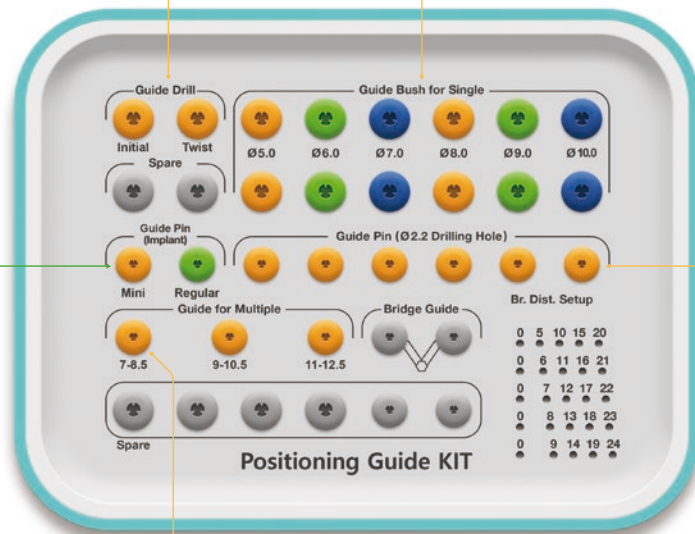
Guide Pin (Implant)

PGSPM
PGSPR



Guide Pin

PGSP22



Bridge Guide (Fan Type)

PGBRA070
PGBRA090
PGBRA110



Positioning Guide Full KIT (OPGAK)

Lower panel components:

Multi Joint Handle ^{Option}
MJH



L-Wrench ^{Option}
LWC20H



Denture Guide ^{Option}
PGODA



GD2208NC
GD2213FNC

Guide Drill

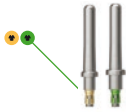


SGB050 SGB080
SGB060 SGB090
SGB070 SGB100

Single Guide

Guide Pin (Implant)

PGSPM
PGSPR



Bridge Guide (Fan Type)

PGBRA070
PGBRA090
PGBRA110



Bridge Guide (Compass Type)

PGBPA



Distance setup Pin

PGDSP



Guide Pin

PGSP22

