

OneGuide KIT

The OneGuide Kit empowers clinicians to achieve predictable guided surgery via patient-specific, 3D-printed templates. It simplifies implant planning and execution, helping visualize anatomical limitations and crown space before placing the abutment - offering higher accuracy and safety.



STRAIGHTFORWARD, ACCURATE DRILLING SEQUENCE

Builds on the proven 122 Taper Kit workflow, streamlining steps according to bone quality to reduce deviation risks.



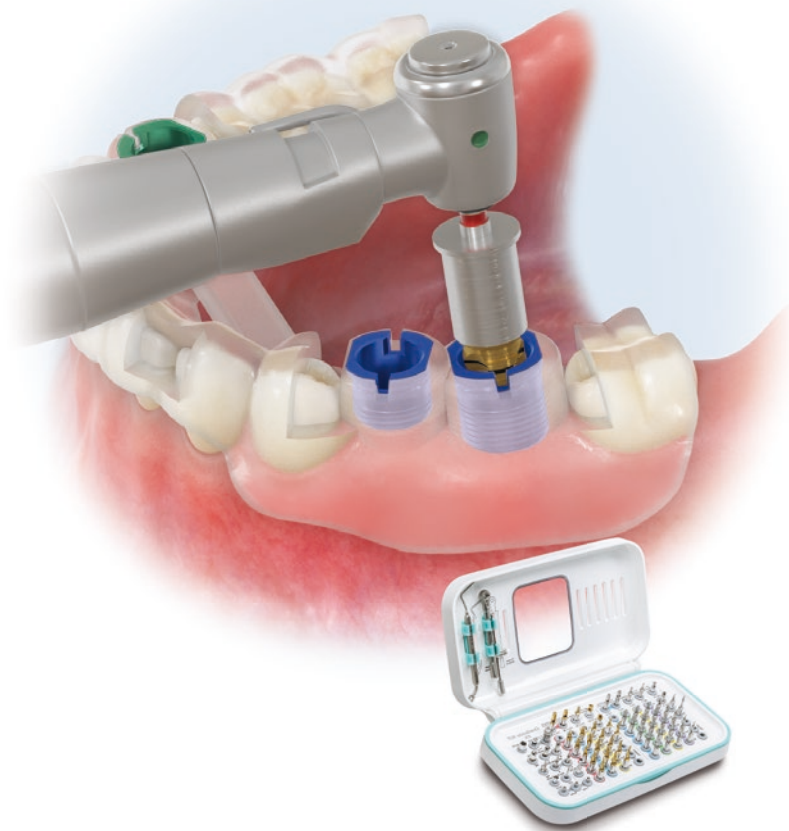
STABILIZED DRILLS WITH DUAL CONTACT GUIDANCE

The initial drill achieves up to 3 mm contact with the guide sleeve for precise insertion. The second drill maintains this stabilization within the osteotomy for enhanced accuracy.



INTUITIVE DIGITAL WORKFLOW

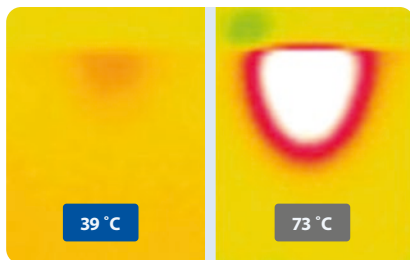
Supports data input from CT or intraoral scans, followed by planning, template design, and 3D printing - bridging digital planning with in-clinic execution.



Benefits

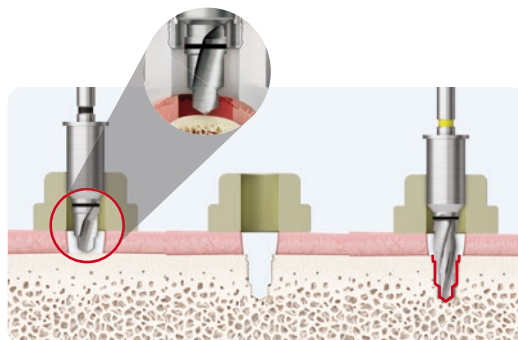


Side open for easy irrigation



OneGuide drill

Conventional drill



Accurate surgery with stabilized drills

OneGuide KIT (OOGK)

Top panel components:

Torque Wrench
TW30B



Depth Gauge
OSDG

