

OneCAS KIT

The OneCAS Kit is a state-of-the-art, guided sinus lift solution that merges the benefits of the CAS (Crestal Approach Sinus) methodology with Osstem's OneGuide digital system. It enables clinicians to pre-plan implant position, depth, and angulation before surgery and execute crestal sinus elevation with precision and safety.



DIGITAL PREOPERATIVE PLANNING

Utilize CT and oral scan data to define implant length, position, and angulation - resulting in a patient-specific surgical guide.



REDUCED RISK OF SINUS MEMBRANE PERFORATION

Features an inverse conical drill tip with a rounded edge to preserve the Schneiderian membrane and allow autogenous bone collection.

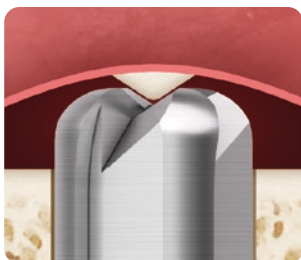


INTEGRATED HYDRAULIC LIFT & GRAFTING WORKFLOW

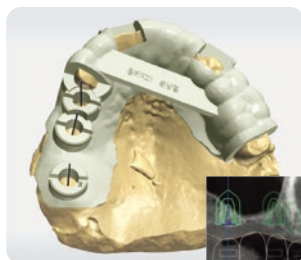
After template removal, proceed with hydraulic sinus membrane elevation, followed by bone grafting and implant insertion.



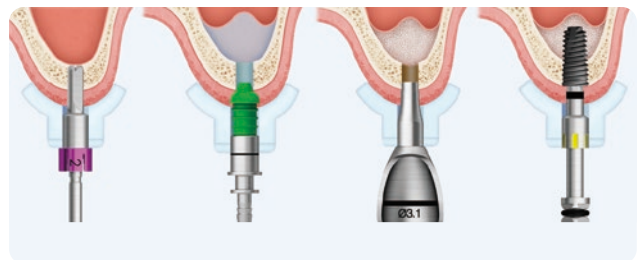
Benefits



Safe round-shaped drill



Fabricated OneGuide surgical template for Sinus



Easy & efficient workflow:

Drilling > Hydraulic Lifting > Bone Grafting > Implant Placement

OneCAS KIT (OOCK)

Top panel components:

Hydraulic Membrane Lifter Tube
SNMT



Depth Gauge & Depth Gauge (W)
OC DG, OCDGW



Lower panel components:

Bone Carrier Head
OCBCH32, OCBCH37W



Bone Carrier
OCBCS30



Bone Condenser
SNBC1114

