

One485 KIT

Positioned within Osstem's suite of digital guided surgical tools, the One485 Kit is specifically designed for safely placing short implants in the posterior mandible, especially near the mandibular nerve. It leverages OneGuide digital workflows to enable anatomically accurate and nerve-safe implant placement.



DIGITAL PREOPERATIVE PLANNING

Utilize CT and oral scan data to define implant length, position, and angulation - resulting in a patient-specific surgical guide.



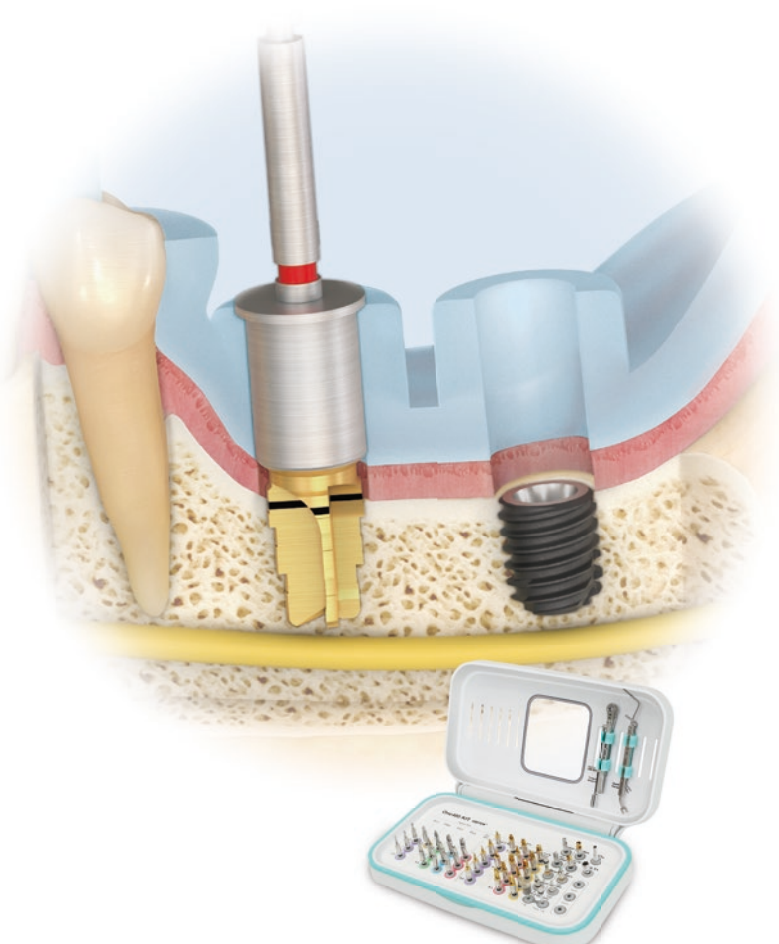
REDUCED RISK OF SINUS MEMBRANE PERFORATION

Features an inverse conical drill tip with a rounded edge to preserve the Schneiderian membrane and allow autogenous bone collection.

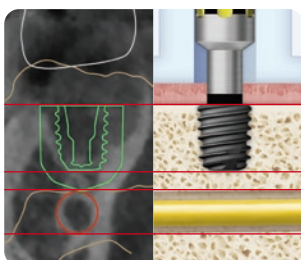


INTEGRATED HYDRAULIC LIFT & GRAFTING WORKFLOW

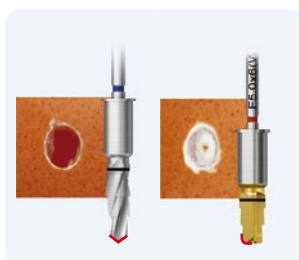
After template removal, proceed with hydraulic sinus membrane elevation, followed by bone grafting and implant insertion.



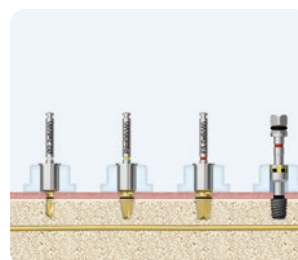
Benefits



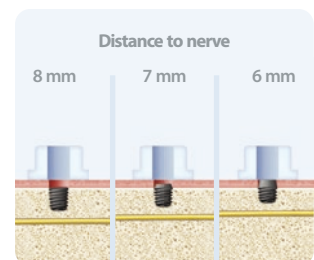
Accurate short implant selection through digital planning and safe surgery using OneGuide



Round Drill prevents nerve damage



Convenient surgery with a simple 3-step drilling sequence



Overcoming various clinical limitations with 4-8.5 mm implants

One485 KIT (OO485K)

Top panel components:

Depth Gauge
MSDG



Torque Wrench
TW30B

